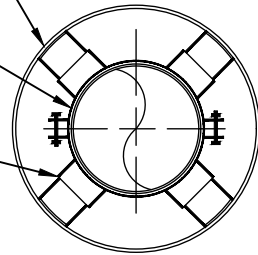


NEW STEEL CASING PIPE UTILIZING  
ASTM A252 STRAIGHT SEAM PIPE

NEW FLEX RING OR  
EQUIVALENT RESTRAINED JOINT D.I. MAIN

STAINLESS STEEL CASING SPACERS  
MODEL BWM SS OR PRE-APPROVED EQUIVALENT



NOTE:  
CONTRACTOR TO INSTALL CASING SPACERS AS NEEDED.  
SPACERS TO BE STAINLESS STEEL - MODEL BWM SS OR PRE-APPROVED EQUAL.  
BOTH ENDS OF CASING TO BE GROUTED WITH CONCRETE BRICK.

SIZE OF D.I. CARRIER PIPE	SIZE OF STEEL CASING PIPE	COATED PIPE MIN. WALL THK.	PIPE CLASS
2"	6"	0.25	ASTM A-252 STRAIGHT SEAM
4"	12"	0.25	ASTM A-252 STRAIGHT SEAM
6"	12"	0.25	ASTM A-252 STRAIGHT SEAM
8"	16"	0.334	ASTM A-252 STRAIGHT SEAM
12"	20"	0.375	ASTM A-252 STRAIGHT SEAM
16"	24"	0.406	ASTM A-252 STRAIGHT SEAM
20"	30"	0.438	ASTM A-252 STRAIGHT SEAM



GreenvilleWater

## CASING PIPE

REVISION DATE:

05/15/2024

(NOT TO SCALE)

DETAIL NO: